



## Power Supply Cord



Appliances



Automated



Medical



Recreation



Energy



Computer



Industrial

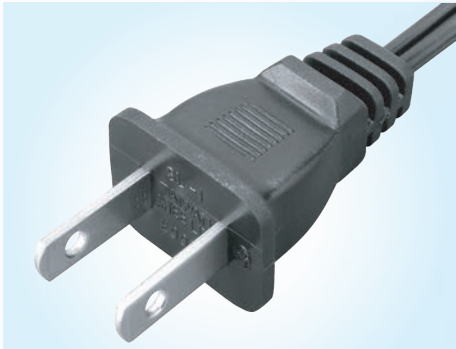


## Waterproof Cable Connector

Manufacturer & Exporter

# SHREE LINE

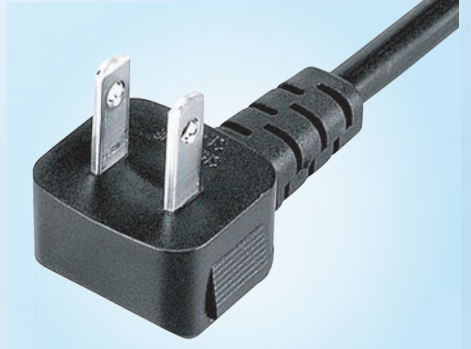
# TAIWAN / PSE TYPE



**SL-1**  
VFF 0.75~2.0mm<sup>2</sup>/2C  
VCTFK 0.75~2.0mm<sup>2</sup>/2C  
VCTF 0.75~2.0mm<sup>2</sup>/2C



**SL-1G**  
VCTF 0.75~2.0mm<sup>2</sup>/3C



**SL-1L**  
VFF 0.75~2.0mm<sup>2</sup>/2C  
VCTFK 0.75~2.0mm<sup>2</sup>/2C  
VCTF 0.75~2.0mm<sup>2</sup>/2C



**SL-1LA**  
VFF 0.75~2.0mm<sup>2</sup>/2C  
VCTFK 0.75~2.0mm<sup>2</sup>/2C



**SL-2**  
VCTF 0.75~2.0mm<sup>2</sup>/3C  
VCT 0.75~2.0mm<sup>2</sup>/3C



**SL-3**  
VCTF 0.75~2.0mm<sup>2</sup>/3C



**SL-8**  
VCTFK 0.75 mm<sup>2</sup>/2C  
VFF 0.75 mm<sup>2</sup>/2C  
VCTF 0.75 mm<sup>2</sup>/2C



**SL-1R**  
VFF VCTF 0.75~1.25mm<sup>2</sup>/2C



**SL-12**  
VCTF 0.75mm<sup>2</sup>/3C



**SL-23**  
VCTF 2.0mm<sup>2</sup>/3C

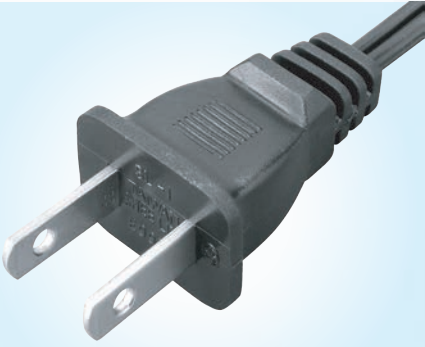


**SL-202 (NEMA 6-20P)**  
VCT3.5mm<sup>2</sup>/3C  
VCTF 1.25~2.0mm<sup>2</sup>/3C



**SL-205**  
VCTF 0.75~2.0mm<sup>2</sup>/3C  
VCT 0.75~2.0mm<sup>2</sup>/3C

# US / CANADIAN TYPE



**SL-1 (NEMA-1-15P)**  
 SPT-1, SPT-2 18AWG/2C  
 SPT-1, SPT-2 16AWG/2C (Non Integral)  
 HPN 18AWG/2C



**SL-1P**  
 SVT 18AWG/2C      SJT 16AWG/2C  
 SJT 18AWG/2C      SJT 14AWG/2C  
 (Non Integral)



**SL-2 (NEMA-5-15P)**  
 SVT 18AWG/3C  
 SJT,SJTW,SJTO,SJTOW 18~12AWG/3C  
 ST,STW,STO,STOW 18~16AWG/3C



**SL-7 (NEMA-5-15R)**  
 SVT,SJT 18AWG/3C (SHIELDED)  
 SJT 16AWG/3C  
 SJT 14AWG/3C



**SL-22 (Hospital Power Cord)**  
 SJT,SJTW,SJTO,SJTOW 14AWG/3C  
 SJT,SJTW,SJTO,SJTOW 16AWG/3C  
 SJT,SJTW,SJTO,SJTOW 18AWG/3C



**SL-205 (NEMA-5-15P)**  
 SVT 18AWG/3C  
 SJT,SJTW,SJTO,SJTOW 18~12AWG/3C  
 ST,STW,STO,STOW 18~16AWG/3C



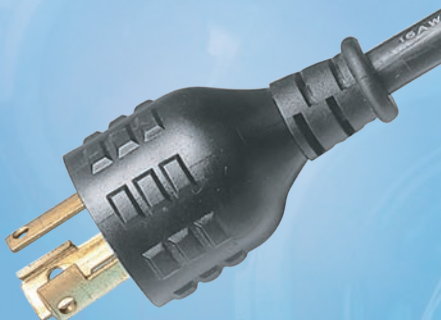
**SL-206 (NEMA 6-15P)**  
 SVT 18AWG/3C  
 SJTW,SJTO,SJTOW 18~12AWG/3C



**SL-207 (NEMA 6-20P)**  
 SJTW,SJTO,SJTOW 16~12AWG/3C



**SL-208 (NEMA 5-20P)**  
 SJTW,SJTO,SJTOW 16~12AWG/3C



**SL-515P (NEMA L5-15P)**  
 SJT,SJTW 16AWG/3C  
 SJT,SJTW 14AWG/3C



**SL-520P (NEMA L5-20P)**  
 SJ, SJTO, SJO, SJTOW, SJTW 12 AWG/3C



**SL-520R (NEMA L5-20R)**  
 SJ, SJTO, SJO, SJTOW, SJTW 12 AWG/3C



# EUROPEAN TYPE



# US / CANADIAN TYPE



### SL-5 (CEE7XVII)

H03VVH2-F 0.75mm<sup>2</sup>/2C  
H05VVH2-F 0.75mm<sup>2</sup>/2C



### SL-6 (CEE7-VII)

H05VV-F 0.75~1.5mm<sup>2</sup>/3G  
H05RN-F 0.75~1.0mm<sup>2</sup>/3G



### SL-8P (IEC 320 C7)

NI-SPT1, NI-SPT2 18AWG/2C  
SPT1, SPT2, 18AWG/2C



### SL-9 (CEE7-VII)

H05VV-F 0.75~1.5mm<sup>2</sup>/3G  
H05RN-F 0.75~1.0mm<sup>2</sup>/3G



### SL-10 (CEE7-XVII)

H03VVH2-F 0.75mm<sup>2</sup>/2C  
H05VVH2-F 0.75mm<sup>2</sup>/2C  
H03VV-F 0.75mm<sup>2</sup>/2C  
H05VV-F 0.75~1.0mm<sup>2</sup>/2C



### SL-530P (NEMA L5-30P)

SJT, SJTW 12AWG/3C  
SJT, SJTW 10AWG/3C



### SL-21

H03VV-F 0.75mm<sup>2</sup>/3G  
H05VV-F 0.75~1.5mm<sup>2</sup>/3G



### SL-17 (I M Q) Italy Plug

H05VV-F 0.75~1.0mm<sup>2</sup>/3G



### SL-620P (NEMA L6-20P)

SJT, SJTW, SJTOW 12~10AWG/3C



### SL-24 Swiss plug

H05VV-F 0.75~1.5mm<sup>2</sup>/3G



### QP-026 (BS1363)

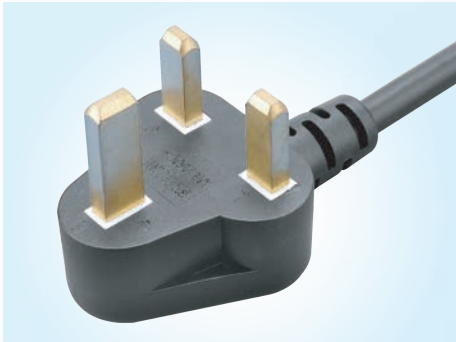
H03VVH2-F, H05VVH2-F 0.75mm<sup>2</sup>/2C  
H03VV-F 0.75mm<sup>2</sup>/3G  
H05VV-V 0.75~1.5mm<sup>2</sup>/3G  
H05RN-F 0.75~1.0mm<sup>2</sup>/3G



### SL-T520R (NEMA 5-20R)

SJT, SJTW, SJTO, SJTOW 16~12AWG/3C

# OTHERS



**SL-A01 (British Regions Using)**  
 H03VV-F 0.75mm<sup>2</sup>/3G  
 H05VV-F 0.75~1.5mm<sup>2</sup>/3G  
 H05RN-F 0.75~1.0mm<sup>2</sup>/3G



**SL-A03 (For Use In South Africa)**  
 H03VVH2-F, H05VVH2-F 0.75mm<sup>2</sup>/2C  
 H05VV-F 0.75~1.5mm<sup>2</sup>/3G  
 H05RN-F 0.75~1.0mm<sup>2</sup>/3G



**SL-16 (SAA)Australia Plug(AS/NZS 3112)**  
 H03VV-F 0.75mm<sup>2</sup>/3G  
 H05VV-F 0.75~1.5mm<sup>2</sup>/3G  
 H05VVRN-F 0.75~1.0mm<sup>2</sup>/3G



**SL-15 (SAA)Australia Plug(AS/NZS 3112)**  
 H03VVH2-F 0.75mm<sup>2</sup>/2C  
 H05VVH2-F 0.75mm<sup>2</sup>/2C  
 H05VV-F 0.75~1.0mm<sup>2</sup>/2C



**QP-012 (For Use In China)**  
 H03RVV-F 0.75mm<sup>2</sup>/3G  
 H05RVV-F 0.75~1.5mm<sup>2</sup>/3G



**Terminal type**



**SL-26A (For Use In Middle East)**  
 H03VVH2-F, H05VVH2-F 0.75mm<sup>2</sup>/2C  
 H03VV-F, H05VV-F 0.75mm<sup>2</sup>/3G  
 H05VV-F 1.0~1.5mm<sup>2</sup>/3G  
 H05RN-F 0.75~1.0mm<sup>2</sup>/3G



**SL-27A (For Use In India)**  
 H03VVH2-F, H05VVH2-F 0.75mm<sup>2</sup>/2C  
 H03VV-F, H05VV-F 0.75mm<sup>2</sup>/3G  
 H05VV-F 1.0~1.5mm<sup>2</sup>/3G  
 H05RN-F 0.75~1.0mm<sup>2</sup>/3G



**Wiring with SR**



**Wiring Harness**



**Wiring Harness**



**Wiring Harness**



**SL-3 (IEC 320 C13)**  
 SJT 18~14AWG/3C  
 SVT 18AWG/3C  
 H05VV-F 0.75~1.5mm<sup>2</sup>/3G



**SL-4 (IEC 320 C14)**  
 SJT 18~14AWG/3C  
 SVT 18AWG/3C  
 H05VV-F 0.75~1.5mm<sup>2</sup>/3G



**SL-8 (IEC 320 C7)**  
 SPT-1 18AWG/2C  
 SPT-2 18AWG/2C  
 H03VVH2-F 0.75mm<sup>2</sup>/2C  
 H05VVH-F 0.75mm<sup>2</sup>/2C



**SL-11 (IEC 320 C13)**  
 SJT 18~14AWG/3C  
 SVT 18AWG/3C  
 H05VV-F 0.75~1.5mm<sup>2</sup>/3G



**SL-12 (IEC 320 C5)**  
 SVT,SJT,SJTW 18AWG/3C  
 H05VV-F 0.75mm<sup>2</sup>/3G



**SL-19 (IEC 320 C19)**  
 SJT 16~12AWG/3C  
 H05VV-F 1.0~1.5mm<sup>2</sup>/3G



**SL-20 (IEC 320 C20)**  
 SJT 16~12AWG/3C  
 H05VV-F 1.0~1.5mm<sup>2</sup>/3G



**SL-25 (IEC 320 C15)**  
 SJT 18~14AWG/3C  
 SVT 18AWG/3C  
 H05VV-F 0.75~1.0mm<sup>2</sup>/3G



**SL-29 (IEC 320 C8)**  
 H03VVH2-F 0.75mm<sup>2</sup>/2C  
 SPT-1, SPT-2 18AWG/2C



**SL-30 (IEC 320 C14)**  
 SJT 18~14AWG/3C  
 SVT 18AWG/3C  
 H05VV-F 0.75~1.0mm<sup>2</sup>/3G



**SL-25L (IEC 320 C15)**  
 SJT 18~14AWG/3C  
 SVT 18AWG/3C  
 H05VV-F 0.75~1.0mm<sup>2</sup>/3G



**SL-7AD**  
 SVT 18AWG/3C

# WATERPROOF CABLE CONNECTOR



## SL-M12AF4-0

M12 A-Code Female 4pin  
AC/DC 250V 4A



## SL-M12AM4-0

M12 A-Code Male 4pin  
AC/DC 250V 4A



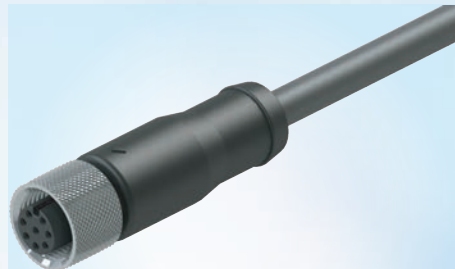
## SL-M12AF5-0

M12 A-Code Female 5pin  
AC/DC 60V 4A



## SL-M12AM5-0

M12 A-Code Male 5pin  
AC/DC 60V 4A



## SL-M12AF8-0

M12 A-Code Female 8pin  
AC/DC 30V 2A



## SL-M12AM8-0

M12 A-Code Male 8pin  
AC/DC 30V 2A



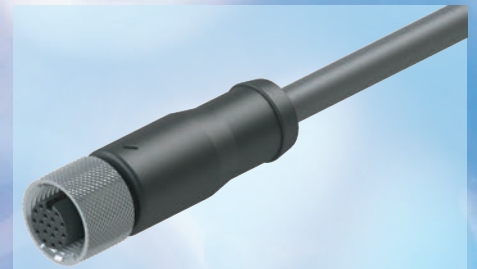
## SL-M12AF12-0

M12 A-Code Female 12pin  
AC/DC 30V 1.5A



## SL-M12AM12-0

M12 A-Code Male 12pin  
AC/DC 30V 1.5A



## SL-M12AF17-0

M12 A-Code Female 17pin  
AC/DC 30V 1.5A



## SL-M12AM17-0

M12 A-Code Male 17pin  
AC/DC 30V 1.5A



## SL-M12DM4-0

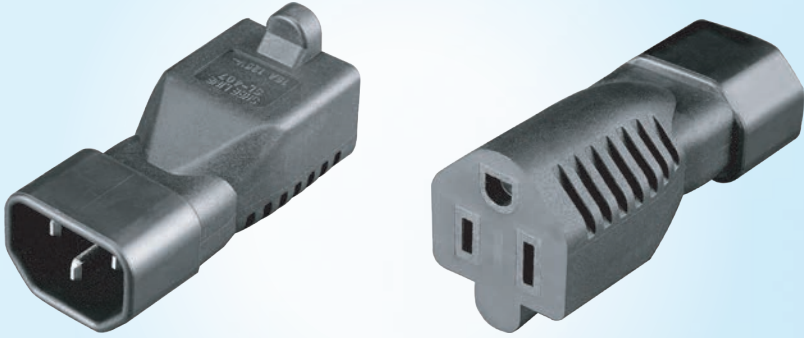
M12 D-Code Male 4pin  
AC/DC 250V 4A



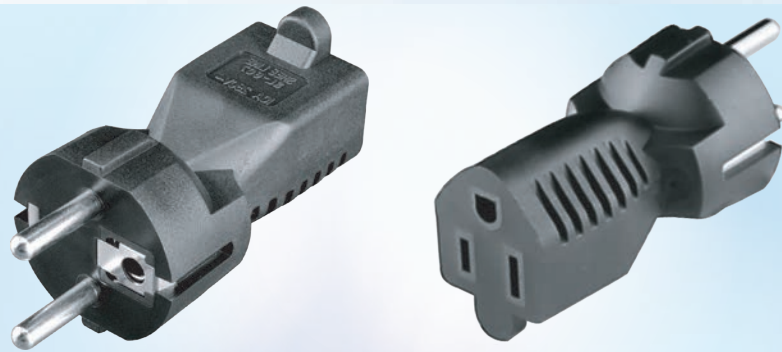
## SL-M12XM8-0

M12 X-Code Male 8pin  
AC 50V/DC 60V 0.5A

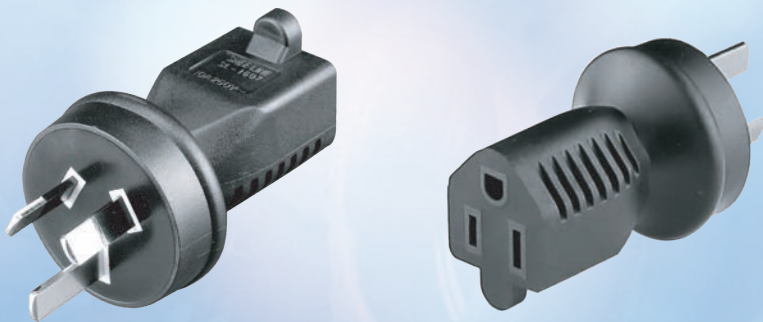
# CONVERTERPLUG ADAPTER



**SL-407**  
IEC 320 C14 TYPE TRANS 5-15R TYPE



**SL-607**  
EUROPEAN TYPE TRANS 5-15R TYPE



**SL-1607**  
AUSTRALIAN TYPE 5-15R TYPE

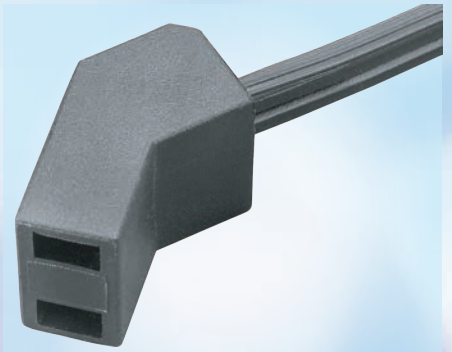


**SL-C603**  
IEC 320 C6 TYPE TRANS IEC 320 C13

# FAN CORD



**SL-F01**  
SPT-1 18AWG/2C  
H03VVH2-F 0.75mm²/2C



**SL-F03**  
SPT-1 18AWG/2C  
H03VVH2-F 0.75mm²/2C



**FAM CORD**  
SPT-1 18AWG/2C  
H03VVH2-F 0.75mm²/2C



**FAM CORD**  
SPT-1 18AWG/2C  
H03VVH2-F 0.75mm²/2C



# ASSEMBLY PLUG



**SL-19A**

H05VV-F 1.0~2.5mm<sup>2</sup>/3G  
SJT, SJTW, SJTOW, SJ, SJOW 16AWG/3G  
SJT, SJTW, SJTOW, SJ, SJOW 12AWG/3G



**SL-20A**

H05VV-F 1.0~2.5mm<sup>2</sup>/3G  
SJT, SJTW, SJTOW, SJ, SJOW 16AWG/3G  
SJT, SJTW, SJTOW, SJ, SJOW 12AWG/3G



**NEMA 5-15P**



**NEMA L5-20P**



**NEMA L5-30P**



**NEMA L6-30P**

# Y CABLE



**SL-4+(SL-3 x 2)**

H05VV-F 0.75mm<sup>2</sup>/3G  
SVT 18AWG/3C



**SL-2+(SL-7 x 2)**

SVT 18AWG/3C



**SL-20+(SL-19 x 2)**

SJT 16~14AWG/3C  
H05VV-F 1.0~1.5mm<sup>2</sup>/3G



**SL-205+(SL-7 x 2)**

SVT 18AWG/3C



**SL-T520R+SL-20**

SJT、SJTW、SJTO、SJTOW 14AWG/3C  
SJT、SJTW、SJTO、SJTOW 16AWG/3C



**SL-8+QP-026**

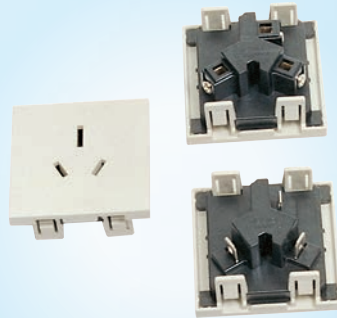
H03VVH2-F 0.75mm<sup>2</sup>/2C

# OUTLET SOCKET

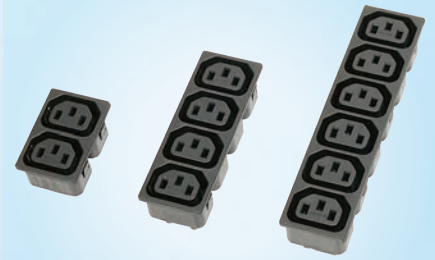
# I.E.C. SOCKET



**SLA-670-10T(R)10A(15A)**



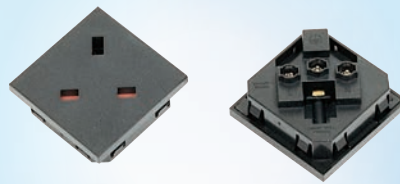
**SLA-670-10T(SQ)10A(15A)**



**SLE-1300**



**SLB-601**



**SLB-602**



**SLE-1300(2P)  
SLE-1401(F)  
SLE-1401(SWF)**



**SLB-608**



**SLF-670(00)**



**SLE-1300(12)  
SLE-1300(11)  
SLE-1400(13)**



**SLF-670(44)**



**SLE-1400(12)  
SLE-1300(11)  
SLE-1300(13)**

# PDU



**SL-EC13R-1 (1U 19")**  
SJT 14AWG/3C 2M  
1650W



**SLG-1P10825(1.5U)**



**SL-E520R-1 (1U 19")**  
SJT 12AWG/3C 2M  
2500W



**SL-E515R-L(1U)**  
SJT 14AWG/3C 2M  
SJT 12AWG/3C 2M



**SL-E515R-0 (1U 19")**  
SJT 14AWG/3C 2M  
1650W



**SL-EBS1363R-0(1.5U)**  
H05VV-F 1.5mm<sup>2</sup>/3G 2M  
SJT 14AWG/3C 2M



**SLE-110(3E2.5M)A1U**



**SL-3M15C13L-15A**



**SLA-1P10825(1U)**



**SL3M2U-20A**



**SL-E515R-2(1U)**  
SJT 14AWG/3C 2M  
SJT 12AWG/3C 2M



### SL-E314-0

電源規格：VCTF 2.0mm<sup>2</sup>/3C 1.8M  
 額定規格：AC 125V 15A 1650W MAX  
 輸出規格：1開關4插座3P  
 驗證登錄：R31583  
 RoHS  
 生產國別：台灣

### SL-E316-0

電源規格：VCTF 2.0mm<sup>2</sup>/3C 1.8M  
 額定規格：AC 125V 15A 1650W MAX  
 輸出規格：1開關6插座3P  
 驗證登錄：R31583  
 RoHS  
 生產國別：台灣

### SL-E344-0

電源規格：VCTF 2.0mm<sup>2</sup>/3C 1.8M  
 額定規格：AC 125V 15A 1650W MAX  
 輸出規格：4開關4插座3P  
 驗證登錄：R31583  
 RoHS  
 生產國別：台灣

### SL-E366-0

電源規格：VCTF 2.0mm<sup>2</sup>/3C 1.8M  
 額定規格：AC 125V 15A 1650W MAX  
 輸出規格：6開關6插座3P  
 驗證登錄：R31583  
 RoHS  
 生產國別：台灣

RoHS限用物質表：<http://www.sheeline.com.tw/TW/taiwan-rohs.php>



[www.sheeline.com.tw](http://www.sheeline.com.tw)

# 升林有限公司

## SHEE LINE CO., LTD.

傳真：02-26808160

電話：02-26806781

238新北市樹林區新興街19巷15號

Email: [shle@ms13.hinet.net](mailto:shle@ms13.hinet.net)



[www.shle.com.tw](http://www.shle.com.tw)